

SI-5501 Drill SI-5506 Reversible Drill

- Super light weight & compact design with solid composite body
- Based on two-layer molded rubber grip giving comfortable grip and reducing vibration
- 3/8" capacity geared pistol grip drill
- A swivel lever for regulator can be used with one hand allowing easy operation

	SI-5501	SI-5506
Free Speed r.p.m.	2,400	1,700
Chuck Size mm/(in.)	10/(3/8)	10/(3/8)
Spindle Size	3/8-24UNF	3/8-24UNF
Drilling Cap mm/(in.)	10/(3/8)	10/(3/8)
Out Put Watt	234	146
Max Torque Nm/(ft-lb)	3.80/(2.79)	F 2.67/(1.96) R 2.58/(1.89)
Weight kg/(lb)	0.60/(1.32)	0.60/(1.32)
Noise Level dBA/(power)	80/(91)	80/(91)
Vibration a/k m/s ²	2.6/0.7	1.9/0.6
Max Air Consumption CFM/(L/S)	13.2/(6.2)	14.4/(6.8)
Avg Air Consumption CFM/(L/S)	2.2/(1.0)	2.4/(1.1)

Standard Accessory
 Chuck: KD-002 (3/8" Drill Chuck w/Handle KG1)
 Handle: (included)

SI-5506 Reverse Lever

SI-5355 Angle Head Drill

- 3/8" capacity geared angle head drill
- Designed to facilitate drilling in confined places

Free Speed r.p.m.	1,200
Chuck Size mm/(in.)	10/(3/8)
Spindle Size	3/8-24UNF
Drilling Cap mm/(in.)	10/(3/8)
Out Put Watt	180
Max Torque Nm/(ft-lb)	F 4.54/(3.37) R 4.37/(3.21)
Weight kg/(lb)	0.94/(2.07)
Noise Level dBA/(power)	84/(95)
Vibration a/k m/s ²	3.2/0.8
Max Air Consumption CFM/(L/S)	18.0/(8.5)
Avg Air Consumption CFM/(L/S)	3.0/(1.4)

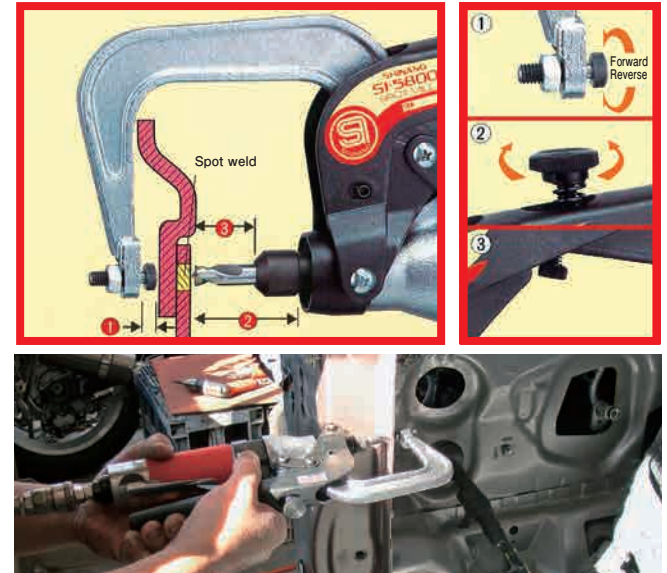
Standard Accessory
 Chuck: KD-004 (3/8" Drill Chuck w/Handle KK)
 Handle: (included)

SI-5800 Spot Mill

- Specially designed to remove spot welds on body panels of motorcars. Work guide makes easy operation
- Easy to adjust depth of cut
- Special designed tool for spot welding separation
- With ø8mm Mill
- With sleeve for ø6.5mm Mill

Free Speed r.p.m.	1,600
Chuck Size mm/(in.)	8/(5/8)
Endmill Size	ø8
Milling Cap mm/(in.)	8/(5/16)
Out Put Watt	197
Weight kg/(lb)	1.80/(3.96)
Noise Level dBA/(power)	82/(93)
Vibration m/s ²	<2.5
Max Air Consumption CFM/(L/S)	18.0/(8.5)
Avg Air Consumption CFM/(L/S)	3.0/(1.4)

Standard Accessory
 271-17



SI-5405 Reversible Drill

- Triple idler planetary gearing for smooth operation and extended tool life.
- Body end mounted reverse lever for one hand directional changes.
- High quality 3/8" chuck.

Free Speed r.p.m.	1,500
Chuck Size mm/(in.)	10/(3/8)
Spindle Size	3/8-24UNF
Drilling Cap mm/(in.)	10/(3/8)
Out Put Watt	197
Max Torque Nm/(ft-lb)	F 4.83/(3.55) R 4.70/(3.45)
Weight kg/(lb)	1.08/(2.38)
Noise Level dBA/(power)	80/(91)
Vibration a/k m/s ²	2.9/0.9
Max Air Consumption CFM/(L/S)	14.4/(6.8)
Avg Air Consumption CFM/(L/S)	2.4/(1.1)

Standard Accessory
 (Yukiwa)
 LX10

SI-5405-6 Reversible Drill

- Side handle assures easy operation and prevent wrist from injuries.
- Double reduction mechanism for exceptional power.
- 1/2" capacity standard rated grill chuck.

Free Speed r.p.m.	600
Chuck Size mm/(in.)	13/(1/2)
Spindle Size	3/8-24UNF
Drilling Cap mm/(in.)	13/(1/2)
Out Put Watt	186
Max Torque Nm/(ft-lb)	10.58/(7.80)
Weight kg/(lb)	1.41/(3.10)
Noise Level dBA/(power)	82/(93)
Vibration a/k m/s ²	3.4/0.8
Max Air Consumption CFM/(L/S)	13.8/(6.5)
Avg Air Consumption CFM/(L/S)	2.3/(1.1)

Standard Accessory
 (Yukiwa)
 LM13W

Standard Accessory
 210-5-1A

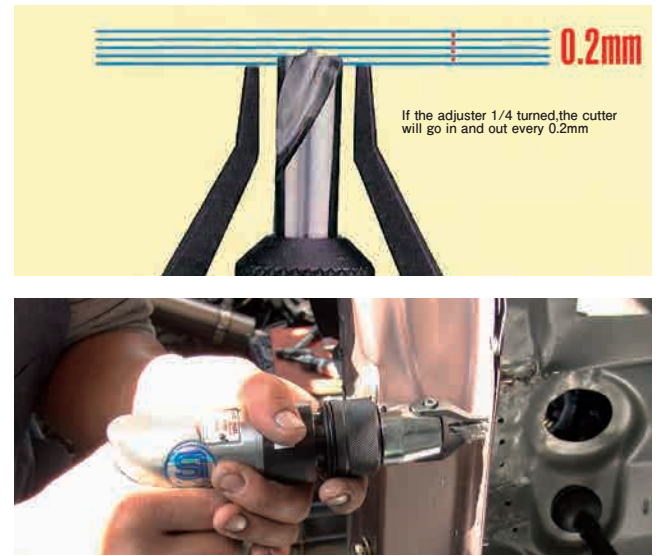
SI-5850 Spot Mill

- Specially designed to remove spot welds on body panel of motorcars
- Work guide makes easy operation
- Easy to adjust depth of cut
- Special designed tool for spot welding separation
- With ø8mm Mill

Free Speed r.p.m.	2,000
Chuck Size mm/(in.)	8/(5/8)
Endmill Size	ø8
Milling Cap mm/(in.)	8/(5/16)
Out Put Watt	390
Weight kg/(lb)	1.39/(3.06)
Noise Level dBA/(power)	83/(94)
Vibration m/s ²	<2.5
Max Air Consumption CFM/(L/S)	7.8/(3.7)
Avg Air Consumption CFM/(L/S)	1.3/(0.6)

Standard Accessory
 271-17

Standard Accessory
 210-5-1A



SI-5500 Drill

- 3/8" capacity geared pistol grip drill
- Light duty and reasonable price model
- Ergonomic, compact and lightweight design for easy operation

Free Speed r.p.m.	2,600
Chuck Size mm/(in.)	10/(3/8)
Spindle Size	3/8-24UNF
Drilling Cap mm/(in.)	10/(3/8)
Out Put Watt	258
Max Torque Nm/(ft-lb)	3.54/(2.53)
Weight kg/(lb)	0.79/(1.75)
Noise Level dBA/(power)	85/(96)
Vibration a/k m/s ²	2.8/0.7
Max Air Consumption CFM/(L/S)	15.0/(7.1)
Avg Air Consumption CFM/(L/S)	2.5/(1.2)

Standard Accessory
 Chuck: KD-002 (3/8" Drill Chuck w/Handle KG1)
 Handle: (included)

SI-5505 Reversible Drill

- 3/8" capacity geared pistol grip drill with solid composite body
- Supplied with keyless chuck
- Solid composite body absorbs the vibration remarkably and also protects your hand in a cold environment
- Keyless chuck enable the quick change of drill bits

Free Speed r.p.m.	1,900
Chuck Size mm/(in.)	10/(3/8)
Drilling Cap mm/(in.)	10/(3/8)
Out Put Watt	158
Max Torque Nm/(ft-lb)	F 2.05/(1.51) R 1.81/(1.33)
Weight kg/(lb)	0.75/(1.65)
Noise Level dBA/(power)	80/(91)
Vibration a/k m/s ²	2.5/0.7
Max Air Consumption CFM/(L/S)	15.6/(7.4)
Avg Air Consumption CFM/(L/S)	2.6/(1.2)

Standard Accessory
 (Yukiwa)
 LX10

DRILLS / SPOT MILLS ACCESSORIES	KD-004	LX10	LM13W	KD-003A	KD-002	KK	KG1	100	210-5-1A	271-17
	Chuck / Handle	Chuck / Handle	Chuck / Handle	Chuck / Handle	Chuck / Handle	Chuck / Handle	Chuck / Handle	Collet Driver	Dead handle set	ø8mm milling Cutter
SI-2015AD	★	☆				★			★	
SI-5100A	★	☆				★			★	
SI-5200A			☆	★		★				
SI-5300A	★	☆				★				
SI-5305A		☆				★				
SI-5305-8A			☆	★		★			☆	☆
SI-5501		☆			★		★			
SI-5506		☆			★		★			
SI-5405	☆	★				☆		☆	☆	
SI-5405-6			★	☆		☆			★	
SI-5500		☆			★		★			
SI-5505	☆	★				☆				
SI-5355	★	☆				★				
SI-5800										★
SI-5850									★	★

★ : Standard ☆ : Option