

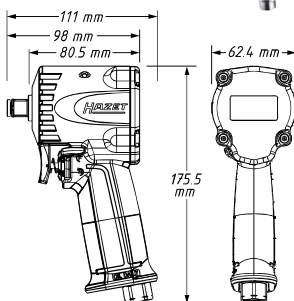


9012 M Impact wrench · extra short

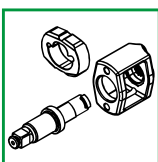
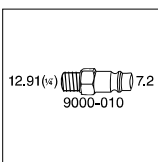
- Loosening torque: 1200 Nm

12.5 1/2

- Exhaust air is guided through the handle downwards
- Reduced vibrations
- Easy handling
- **Extra short – only 80 mm**
- Single hammer striking mechanism
- Air connection inlet: inside thread 12.91 mm (1/4")
- Coupler plug: Nominal size 7.2 (included)
- Recommended torque: 610 Nm
- Hose diameter (recommended): 10 mm
- Working pressure (bar): 6.3
- Sound power level: 103.2 db(A) Lp W
- Vibration acceleration: 13.49 m/s²
- Loosening torque (max) determined with screw size M: 16
- Forward and reverse: three-stage (forward), single-stage (reverse)
- Cold insulated handle
- One-hand operation for right and left-handed operators



YouTube Clip



HAZET No.	max. Nm	max. Nm	l/min.	rpm	db (A) LpA	g	EAN-No. 4000896+
9012 M-1	1200	678	127.4	8800	92.2	1270	218356
Silicone protective cover for 9012 M-1							
9012 M-1-S	-	-	-	-	-	-	222735

- Loosening torque: 1400 Nm

12.5 1/2

- Exhaust air is guided through the handle downwards
- Reduced vibrations
- Easy handling
- **Extra short – only 100 mm**
- Powerful twin hammer mechanism
- Air connection inlet: inside thread 16.41 mm (3/8")
- Coupler plug: Nominal size 7.2 (included)
- Recommended torque: 620 Nm
- Hose diameter (recommended): 10 mm
- Working pressure (bar): 6.3
- Sound power level: 102 db(A) Lp W
- Vibration acceleration: 8.74 m/s²
- Loosening torque (max) determined with screw size M: 16
- Forward and reverse: three-stage (forward and reverse)
- Cold insulated handle
- Mounting bracket
- One-hand operation – for right and left handed operators equally usable

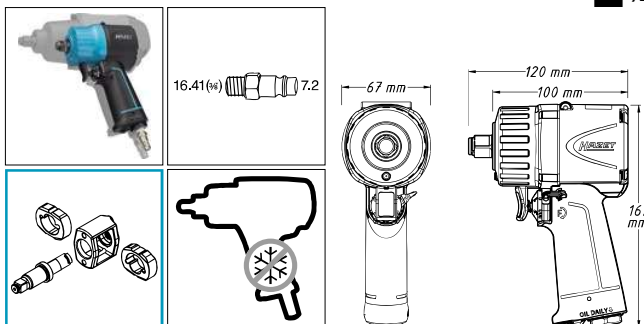


YouTube Clip



9012 Impact wrench · extra short

12.5 1/2



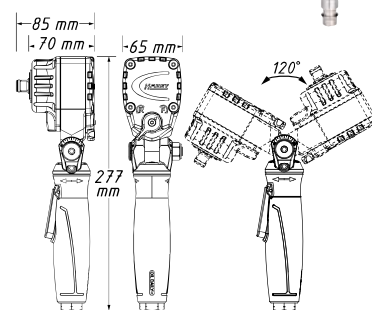
HAZET No.	max. Nm	max. Nm	l/min.	rpm	db (A) LpA	g	EAN-No. 4000896+
9012 MT	1400	745	135	9000	92.7	1320	203598

9012 ATT Twin Turbo impact wrench

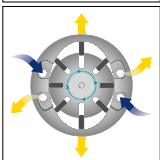
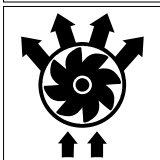
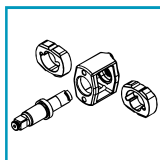
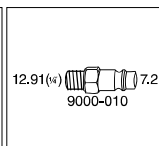
- Loosening torque: 550 Nm

12.5 1/2

- Exhaust air is guided through the handle downwards
- Reduced vibrations
- Easy handling
- Handle / trigger adjustable around its own axis for optimal handling allows operation in any position
- Swivel mechanism for extended application range guarantees best accessibility
- Short, compact, angled design – only 70 mm
- One-hand operation for left- and right-handed users
- Powerful twin hammer mechanism
- Air connection inlet: inside thread 12.91 mm (1/4")
- Coupler plug: Nominal size 7.2 (included)
- Recommended torque: 450 Nm
- Hose diameter (recommended): 10 mm
- Working pressure (bar): 6.3
- Sound power level: 101.1 db(A) Lp W
- Vibration acceleration: 4.89 m/s²
- Loosening torque (max) determined with screw size M: 16
- Forward and reverse: single-stage (right/left)
- Cold insulated handle



YouTube Clip



HAZET No.	max. Nm	max. Nm	l/min.	rpm	db (A) LpA	g	EAN-No. 4000896+
9012 A TT	550	500	113	8000	90.1	1300	234738