

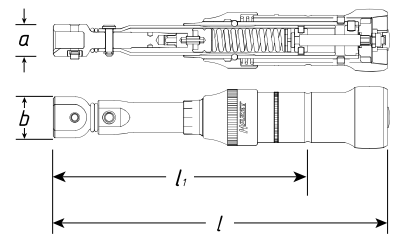
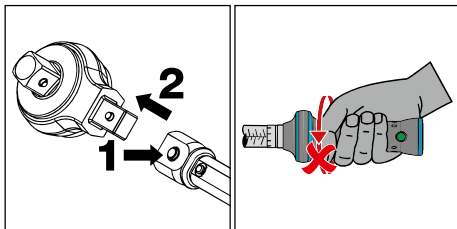


6200-1 CT Torque wrench · SYSTEM 6000 CT · ± 2% accuracy · 2–40 Nm

Made in Germany

E 9 x 12

- Plug-and-socket connection to hold insert tools
- **Accuracy ± 2% of scale value** (in direction of actuation)
- Safety:
 - Haptic (close-gap release)
 - Audible ("click" sound)
- With calibration certificate and serial number
- Especially slim design thanks to spring-loaded puller sleeve for locking the setting values
- Easy and safe adjustment of the desired torque value by turning the handle
- DIN EN ISO 6789-2:2017



* = 6282-1 CT and 6282-1 CT CAL outside the DIN series, as the maximum torque value of the square specified in the standard 6789-1:2017 is exceeded

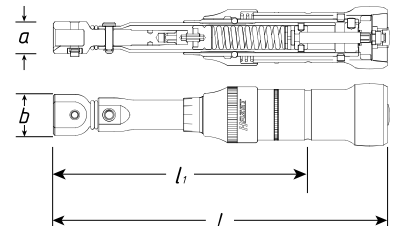
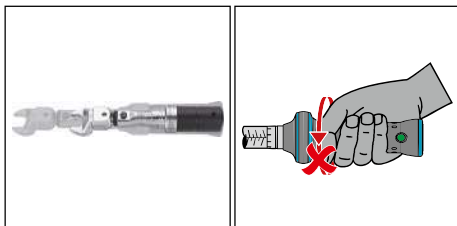
HAZET No.	Output	<i>l</i> mm	<i>l</i> ₁ mm	<i>a</i> mm	<i>b</i> mm	Release accuracy tolerance %	Nm	Nm	Signal transmitter	kg	EAN-No. 4000896+
6280-1 CT	□ 9x12	181	141	17	22	2	2–10	0,2	✗	1,3–6,6	026005
6282-1 CT *	□ 9x12	240	200	17	22	2	4–40	0,4	✗	1,9–19,8	080540
• Torque wrench including DAkkS calibration certificate											
6280-1 CT CAL	□ 9x12	181	141	17	22	2	2–10	0,2	✗	1,3–6,6	193073
6282-1 CT CAL *	□ 9x12	240	200	17	22	2	4–40	0,4	✗	1,9–19,8	193080

6200-1 CT Torque wrench · SYSTEM 6000 CT · ±4% accuracy · 5–13 Nm

Made in Germany

9 x 12

- **Extra short construction for areas with restricted access**
- Plug-and-socket connection to hold insert tools
- **Accuracy ± 4% of scale value** (in direction of actuation)
- Safety:
 - Haptic (close-gap release)
 - Audible ("click" sound)
- With calibration certificate and serial number
- Easy and safe adjustment of the desired torque value by turning the handle
- Surface: hard chrome plated
- DIN EN ISO 6789-2:2017



HAZET No.	Output	<i>l</i> mm	<i>l</i> ₁ mm	<i>a</i> mm	<i>b</i> mm	Release accuracy tolerance %	Nm	Nm	Signal transmitter	kg	EAN-No. 4000896+
6281-2 CT	□ 9x12	125,4	99	17	22	4	5–13	0,2	✗	4,4–11,8	183326